



Big Dutchman®



ChickenBoy

Higher productivity and increased welfare
with an autonomous robot and artificial intelligence

ChickenBoy

An autonomous robot and artificial intelligence support your bird monitoring tasks

ChickenBoy is an analysis robot that supports the daily tasks of broiler producers very effectively. The robot collects valuable data over the entire batch and around the clock. Based on these data, the robot automatically prepares helpful graphs, diagrams and tables.

ChickenBoy is equipped with different sensors and several cameras for this purpose. A great benefit: ChickenBoy moves along fixed rails approximately half a metre above the birds, allowing for a very exact detection and **mapping** of the situation in the barn –

without direct contact with the birds. Would you like to find out more? Our experts will be happy to provide more information and a detailed consultation.



ChickenBoy is equipped with many important sensors

Technical equipment of ChickenBoy

ChickenBoy comes with extensive equipment, including:

- three cameras as standard equipment (optional addition of one more camera)
- climate sensors that measure temperature, relative humidity and air speed
- air quality sensors that measure the CO₂ and NH₃ concentration
- a light sensor
- a sensor to measure the noise level
- a laser pointer to make sure that the birds keep moving

A rail system suspended from the ceiling guarantees animal-friendly, non-contact bird monitoring 24/7, from the first day of the batch to the last.

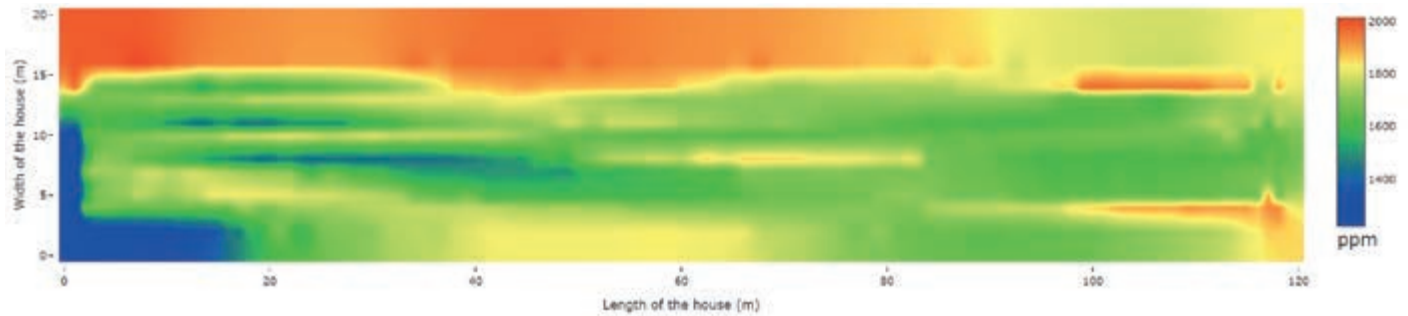


The height of ChickenBoy can be adjusted by a telescopic arm

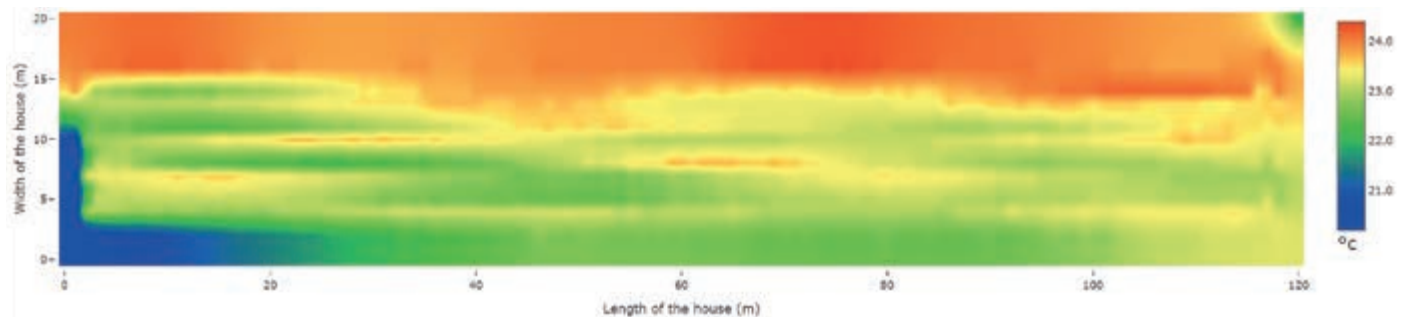
What can ChickenBoy do?

- **Mapping of the climate in the barn**
 - temperature
 - relative humidity
 - air speed
- **Mapping of the air quality in the barn**
 - NH₃ concentration
 - CO₂ concentration
- **Detection and mapping of**
 - the bird distribution in the barn
- dead birds
- wet spots in the litter
- defective nipple drinkers
- **Mapping of the lighting conditions in the barn**
- **Mapping of the noise level in the barn**
- **Excrement rating for the early identification of intestinal diseases**
- **Detection of leg health**
- **Streaming of video and audio tracks**
- **Photographs of birds and equipment at selectable intervals**
- **User-defined alarms via email and text message**

Example of a CO₂ mapping: you can see exactly where values are too high and search for the cause



Example of a temperature mapping: you can see exactly whether ventilation is uniform



Advantages

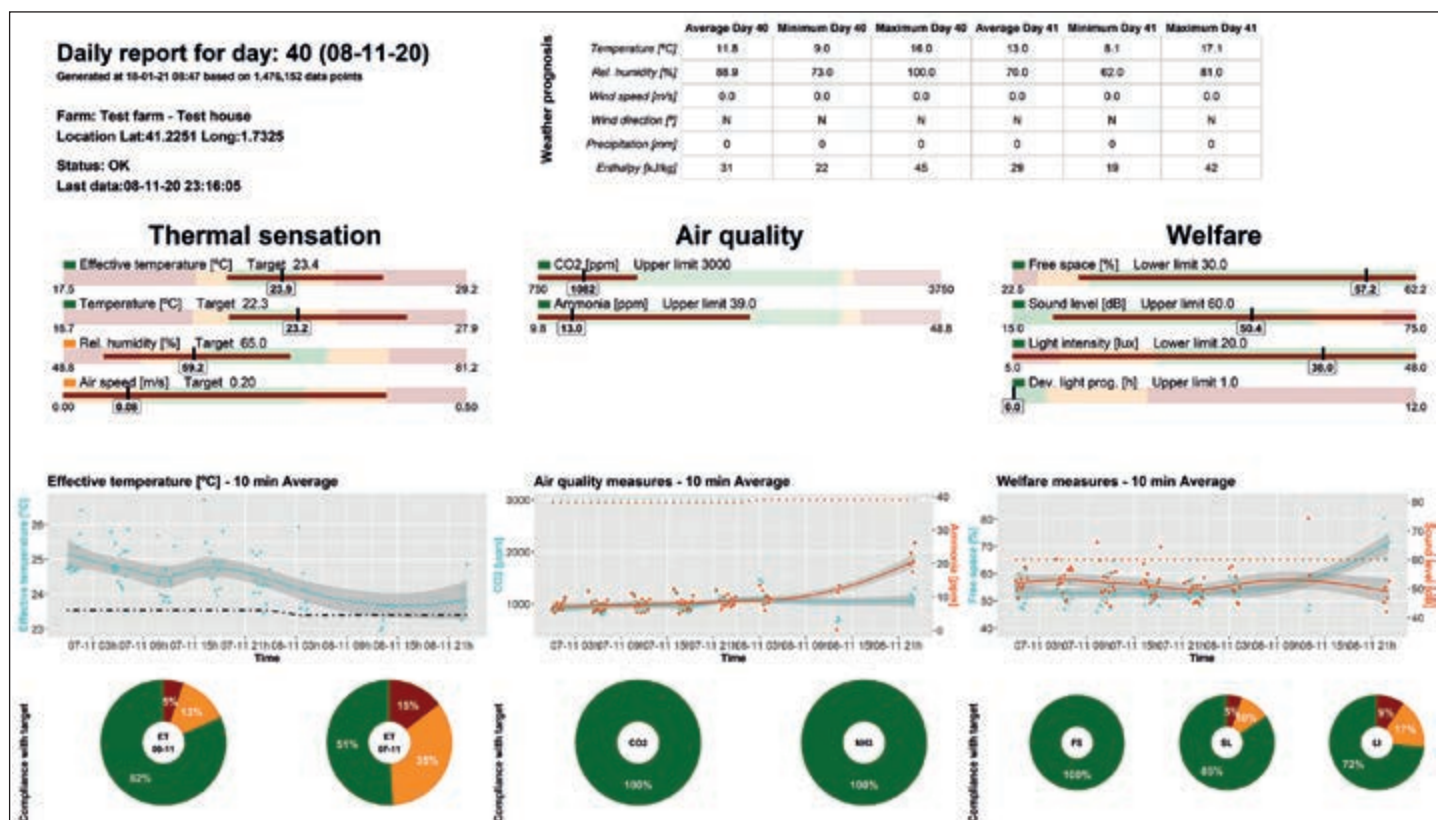
- ✓ higher productivity due to accurately mapped data, intelligent image analysis and evaluation of images and data
 - exact and improved climate control;
 - early detection of diseases;
 - little to no use of antibiotics;
 - faster identification of technical issues;
- ✓ improved bird health and thus also better welfare;
- ✓ permanent weak-point analysis by an autonomous, self-learning AI robot;
- ✓ lower mortality;
- ✓ lower rejection rate in the slaughterhouse;
- ✓ faster reaction to problems.

Keep tabs on your flock: for perfect values that make you smile!



Data analysis at the PC directly in the barn

Whether you are in the barn, at home in your office or on the go with your smartphone: your location does not matter for ChickenBoy's data evaluation in the cloud. The browser-based analysis software is available whenever you are connected to the internet. This software provides many options for evaluation, including a detailed overview of the current situation in the barn and the documentation of the flock's performance over the entire batch. Let ChickenBoy help you find possibilities for optimisation and improve your farm's efficiency.



Big Dutchman.

Europe, Middle East & Africa:
Big Dutchman International GmbH
P.O. Box 1163 · 49360 Vechta, Germany
Tel. +49(0)4447 801-0 · Fax -237
big@bigdutchman.de
www.bigdutchman.de

USA: Big Dutchman, Inc.

Tel. +1 616 392 5981 · bigd@bigdutchmanusa.com
www.bigdutchmanusa.com

Brazil: Big Dutchman (Brasil) Ltda.

Tel. +55 16 2108 5310 · bdb@bigdutchman.com.br
www.bigdutchman.com.br

Russia: 000 "Big Dutchman"

Tel. +7 495 2295 161 · big@bigdutchman.ru · www.bigdutchman.ru

Asia/Pacific: BD Agriculture (Malaysia) Sdn. Bhd.

Tel. +60 3 334 83 555 · bdasia@bigdutchman.com · www.bigdutchman.com

China: Big Dutchman (Tianjin) Livestock Equipment Co., Ltd.

Tel. +86 10 6476 1888 · bdcnsales@bigdutchman.com
www.bigdutchmanchina.com